



# LPS Canine Unit

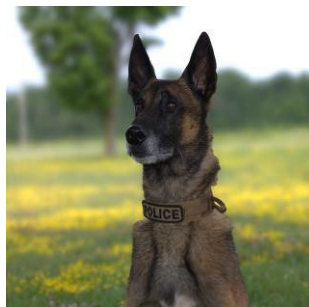
DEEDS



# Current Model

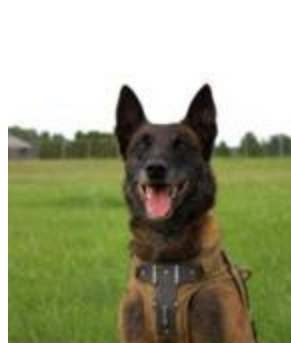
Sgt Wintjes – Master Trainer.  
*Explosive Detection Dog*

Sgt Stanley – Sergeant Trainer  
*Patrol/Explosive Detection Dog*



## 6 Handler Teams

- All certified in general patrol work
- All have secondary detection training (*ie explosives, controlled drugs & firearms, spent ammunition*)

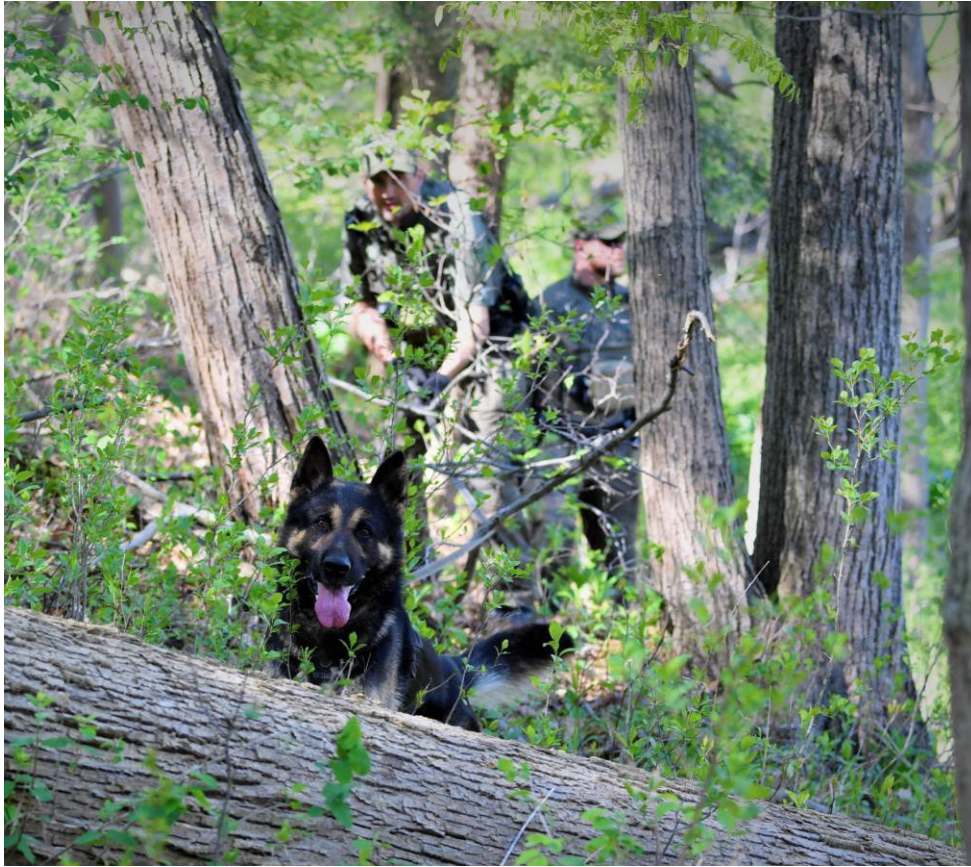


# What do we do?

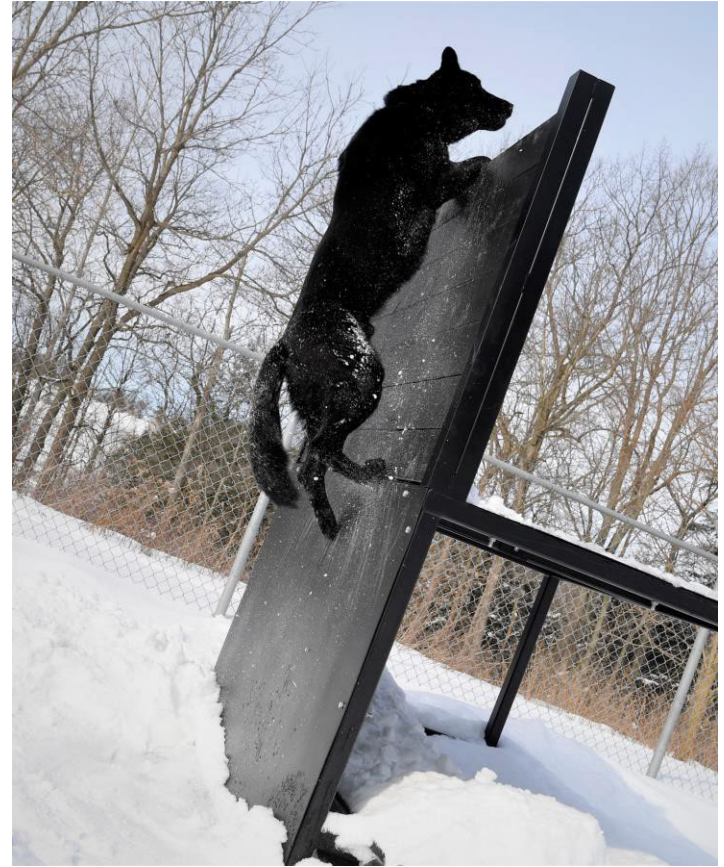


Tracking

# What do we do?



Air Scent Searching

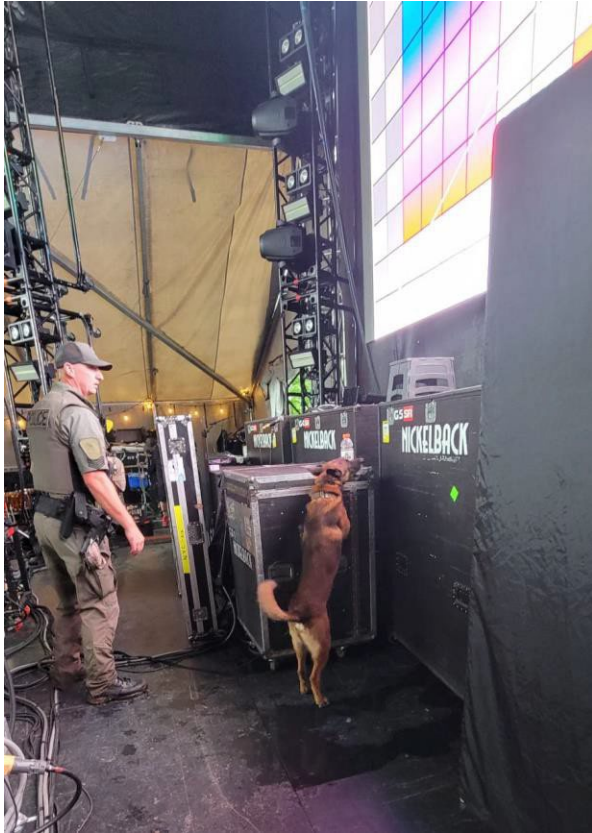


Obedience/Agility

**DEEDS NOT WORDS**



# What do we do?



Explosive Detection



Firearm/Controlled Drugs & Substances Detection



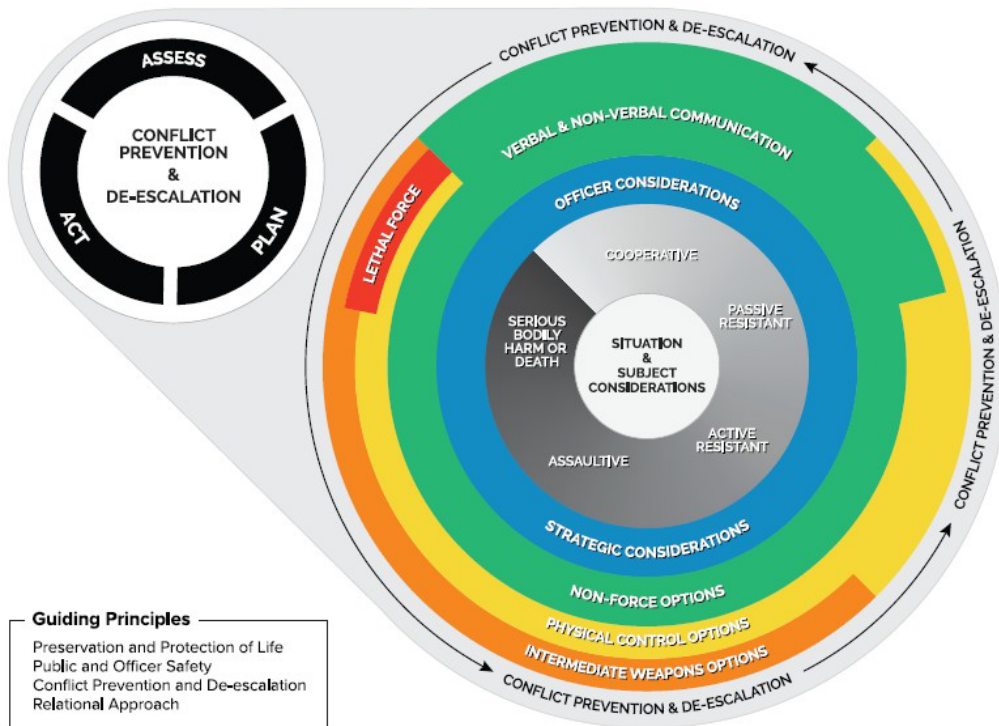
Suspect Apprehension

**DEEDS NOT WORDS**



# K9 Deployments & Use of Force 2020-2024

## Ontario Public-Police Interactions Training Aid (2023)



Despite an increase in K9 calls for service and deployments over the past five years, the percentage of incidents resulting in physical apprehension by the PSD (bite) remains consistently low averaging just over 2% per year.

The officer continuously assesses the interactions and selects the most reasonable option(s) relative to the subject and circumstances given available resources and time.

# K9 Apprehensions as a Percentage of Total Deployments

Year	K9 Deployments	K9 Apprehensions	% Apprehension per Deployment
2020	675	15	2.22%
2021	638	18	2.16%
2022	649	14	2.15%
2023	618	16	2.28%
2024	1063	25	2.35%
2025 YTD	324	15	4.62%*

*\*The data for 2025 reflects year-to-date figures and is currently incomplete, though it shows a slight upward trend. As we are in the peak period for K9 deployments, the final year-end statistics may moderate this number.*

**Key Insight:** Although 2024 saw a sharp increase in deployments, the use of force (physical apprehension) rate stayed within a narrow band, indicating a consistent emphasis on controlled, necessary use of a PSD as an intermediate weapon.

# Arrests Made as a Percentage of Calls for Service

Year	Calls Attended	Arrests Made	% Arrests per Call
2020	1,543	564	36.56%
2021	1,565	638	40.77%
2022	2,289	560	24.47%
2023	1,863	660	35.43%
2024	2,469	981	39.73%
2025 YTD	1,472	597	40.55%

**Key Insight:** 2022 shows a dip in arrests per call, potentially reflecting an increase in non-criminal or assistive crisis-related calls. Arrests per call have otherwise remained in the 35–40% range.